

Interbase Replication Suite Configuration Tutorial

Editor:

Tomáš Mandys, tomas.mandys@2p.cz (2p plus)

Home site:

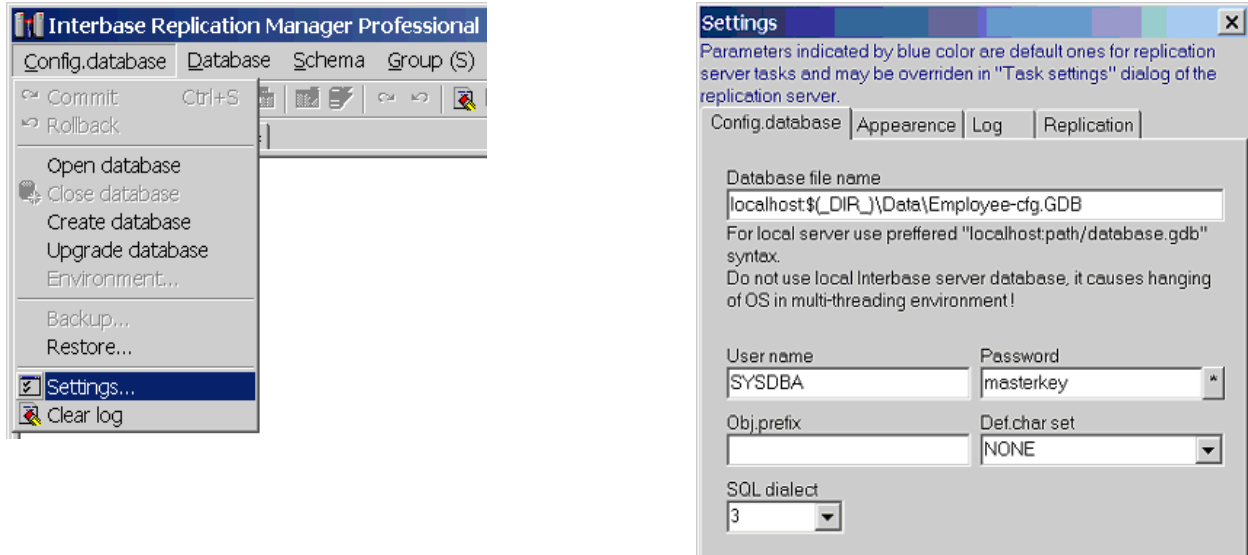
<http://www.2p.cz>

Document status:

Version 1.0 First release

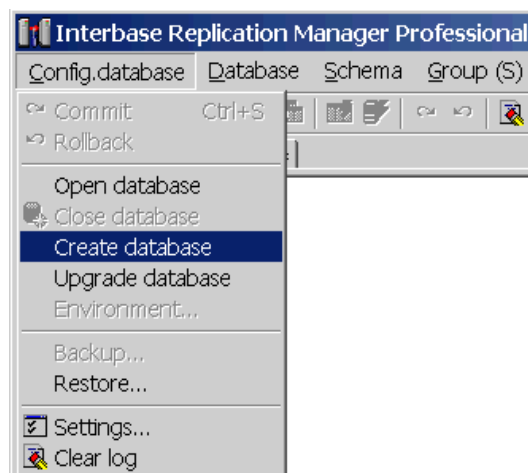
Load *Interbase Replication Manager*

Execute `Config.database/Setting` command and setup configuration parameters



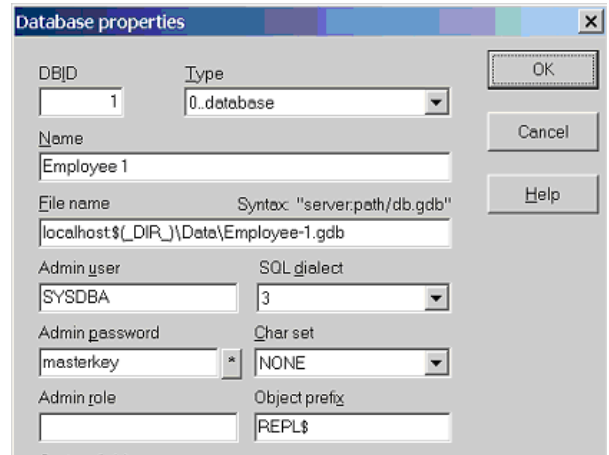
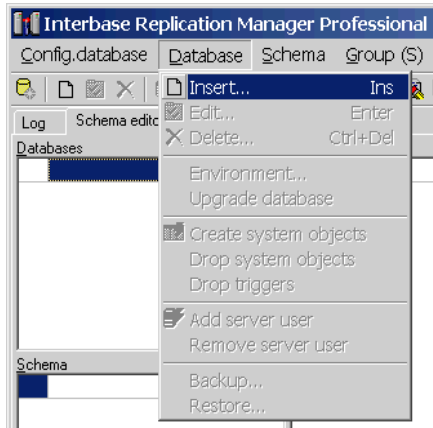
- *Database file name* is the path and name of configuration database, note that `$(_DIR_)` is expanded to *IBRepMan* program directory
- *User name/Password* usually identifies SYSDBA account
- *SQL dialect* is usually 1 unless *Obj.Prefix* contains a space or is case sensitive

Create configuration database



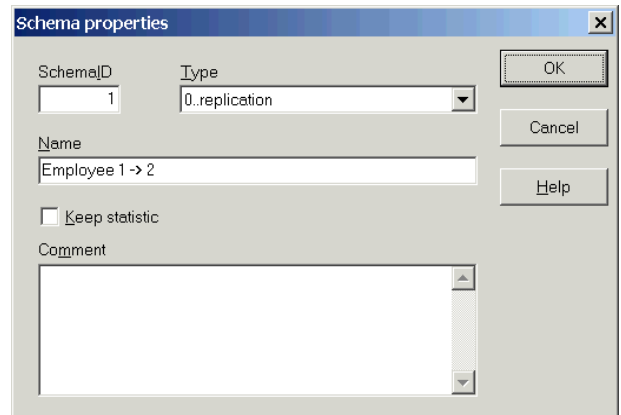
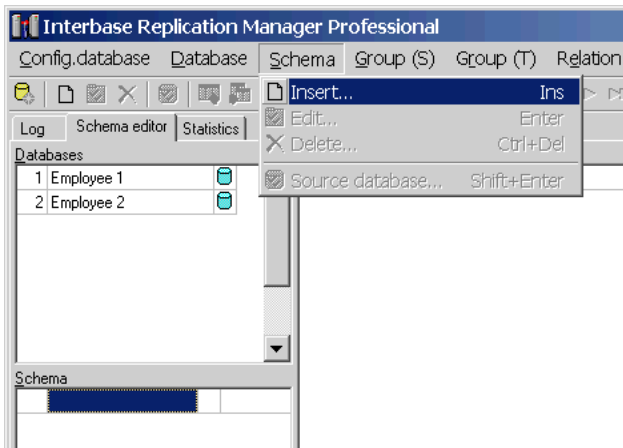
- Command creates new configuration database, if a database already exists create tables

Define source and target databases

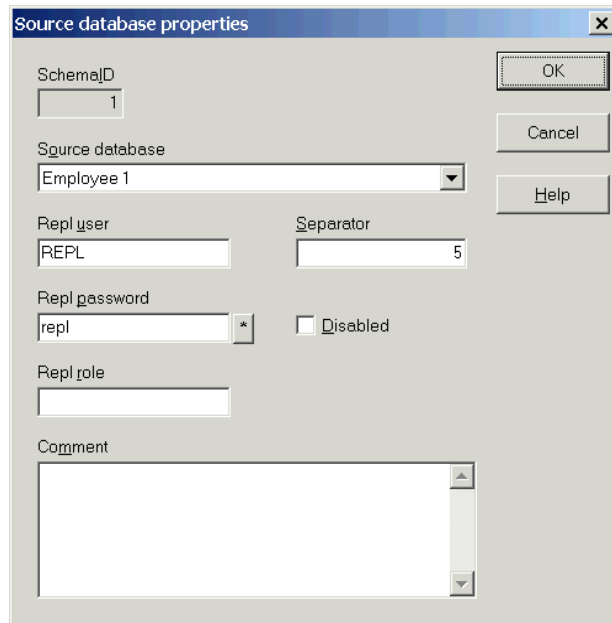
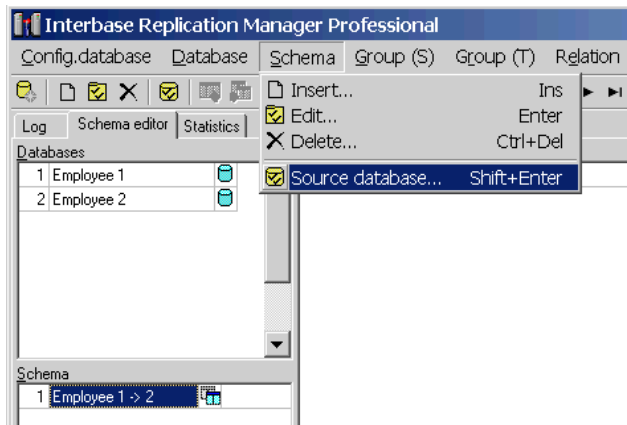


- *Name* is a descriptive name
- *File name* is the path and name of database
- *Admin user/Password* usually identifies SYSDBA account
- *SQL dialect* is usually 1 in Interbase 5.5, in Firebird and Interbase 6.x is recommended dialect 3.

Define replication schemes

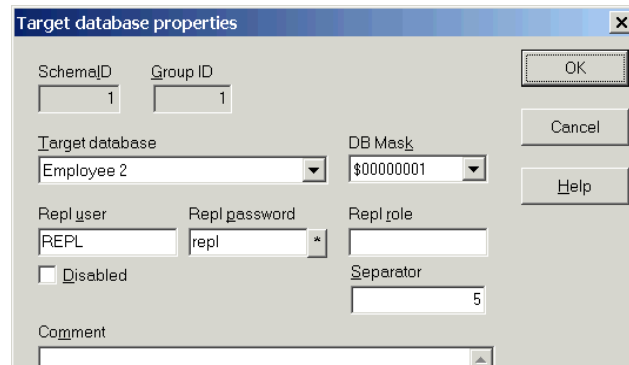
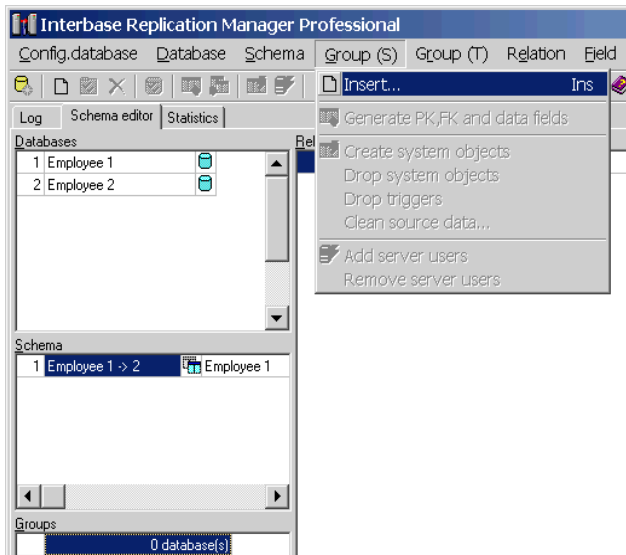


Assign source database to scheme



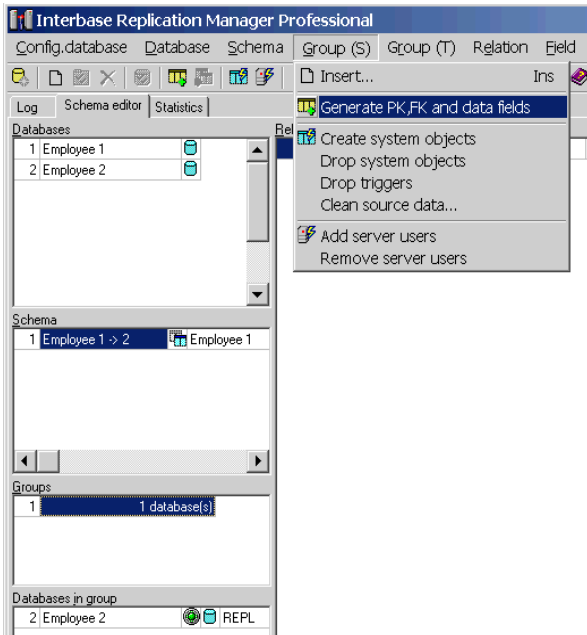
- *Repl user* is a dedicated user used by replicator

Assign target database

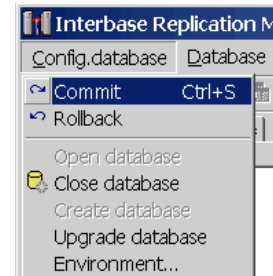


Interbase Replication Suite Configuration Tutorial

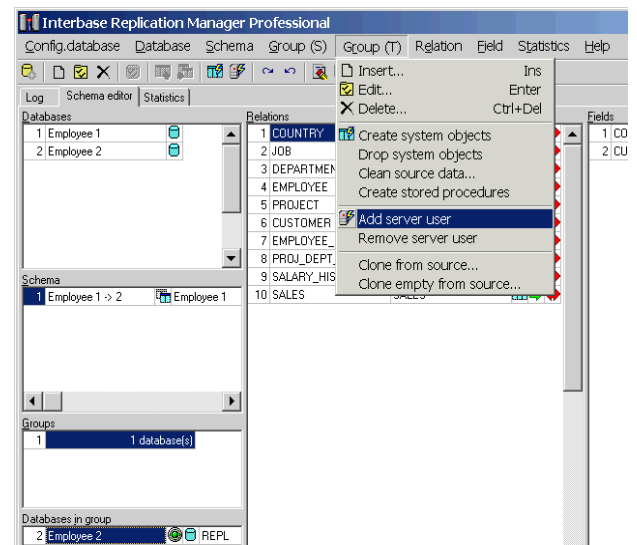
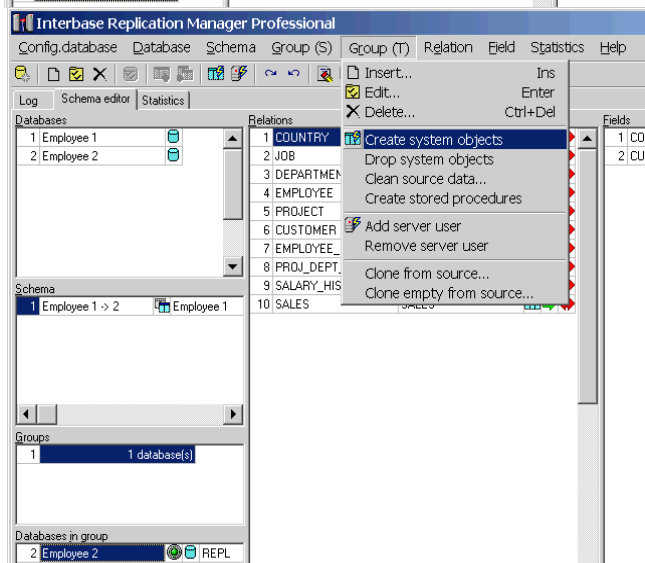
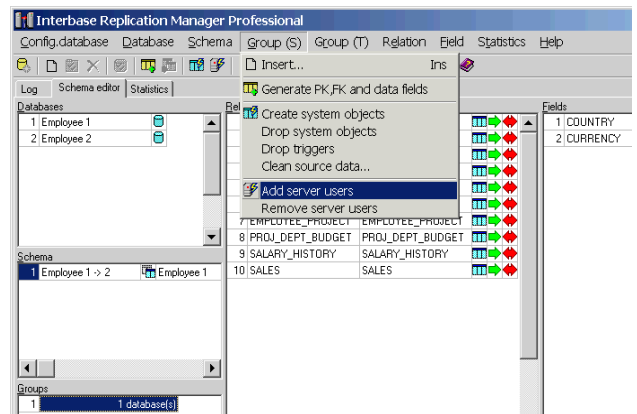
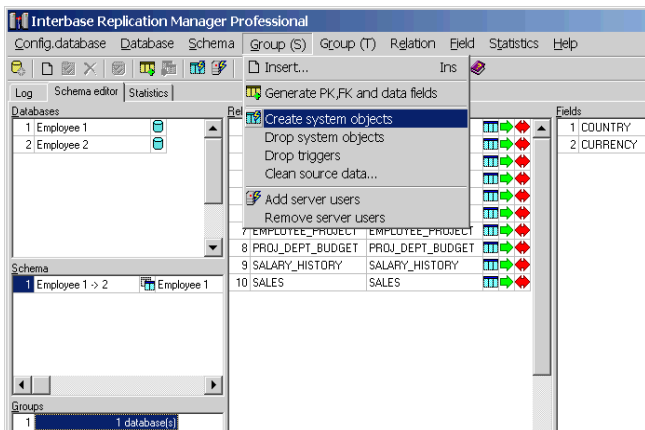
Select tables to be replicated



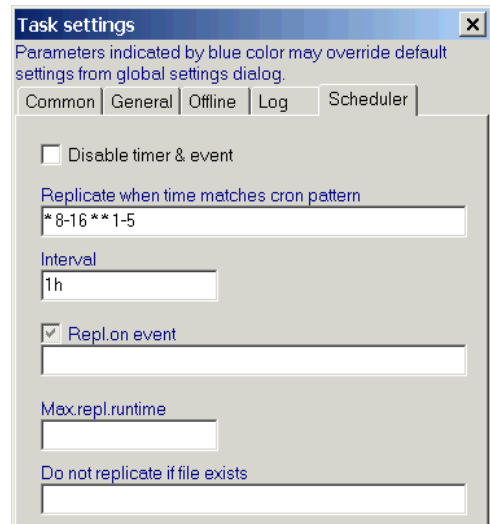
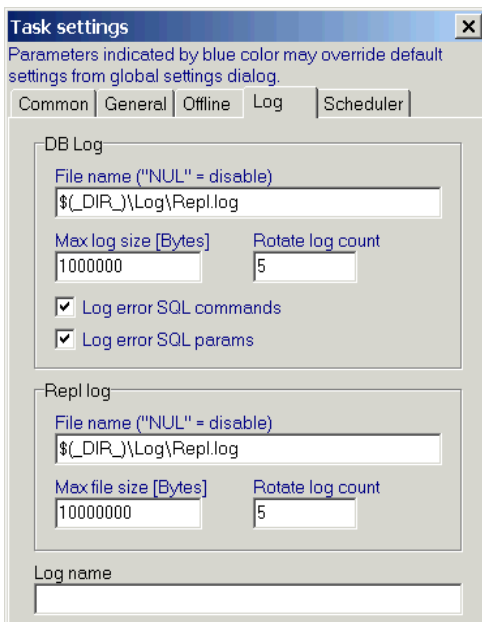
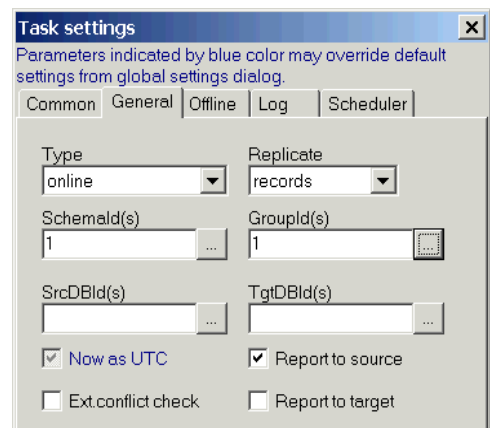
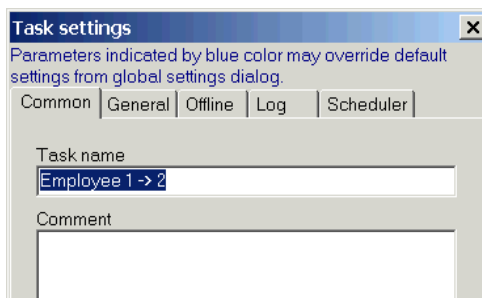
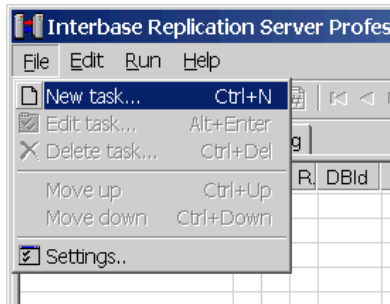
Do not forget to commit your changes using *Config.database/Commit* command



Prepare source and target replication objects and SQL server users



Load *Interbase replication server* and define server tasks



Define time schedules when replication will start, in example above it started hourly during work hours in weekdays

Test replication

Now is project ready to test. Replication is started automatically according scheduler or manually using *Run/Replicate* command.

